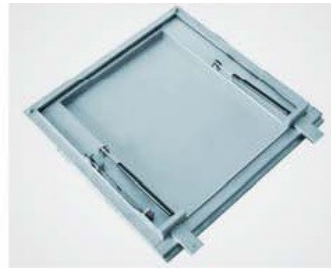
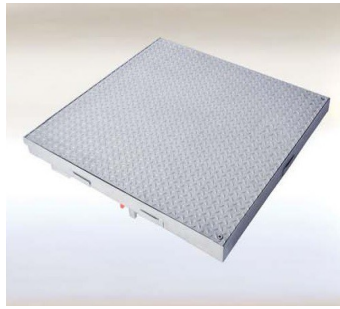



Heika-Ground Automatik


Floor access cover system GRI

Aluminium sheet- with opening assistance





Heika-Ground Automatik System GRI


 **Product description:** The floor access cover system MA-GRI is manufactured with a frame made of 2 mm aluminum sheet and equipped with a circumferential, frost -and weather-resistant special sealing joint, which is largely odor-and water-tight. The frame is set in concrete on grade. The aluminum tread plate is fixed on 2 corner points. The opening process is supported by the high-quality gas pressure spring in a way that the manhole cover can be opened and closed by one single person. A safety stay prevents uncontrolled closing. The installation height amounts to 75 mm only. Completely rust-free.


 **Load:** 15 kN testing force according to EN 124


 **Material:** Frame made of 2 mm aluminum profiles and plate made of 3/5 aluminum tread plate.

 **Areas of use:** For on grade manholes in indoor or outdoor areas, for which highest quality is important.

 **Customized solutions:** Customized sizes can be produced in every dimension upon inquiry.

 **Application options:** For manholes which are to be opened often without particular exertion. Particularly suitable for inspection and revision manholes since for regular maintenance the manhole can be opened and closed without significant exertion.

 **Opening:** A lifting key and installation instructions are included with every FF floor access cover.

 **Installation:** The installation shall be implemented in a professional manner in accordance with our installation instructions. With types with special sealing joint, a tight connection to the frame profile is to be ensured.

Special benefits of our system:

- With aluminum tread plate
- With frost-and weather-resistant special sealing joint.
- With fastening anchors for safe support
- With additional reinforcement cross-braces.
- With gas pressure springs as opening assistance
- Completely rust-free

Item no.	Overall frame size	Clear opening
GRI-600600E75	700x721mm	600x600mm
GRI800800E75	900x921mm	800x800mm
GRI10001000E75	1100x1121mm	1000x1000mm

